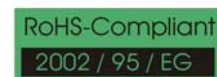


FEATURES

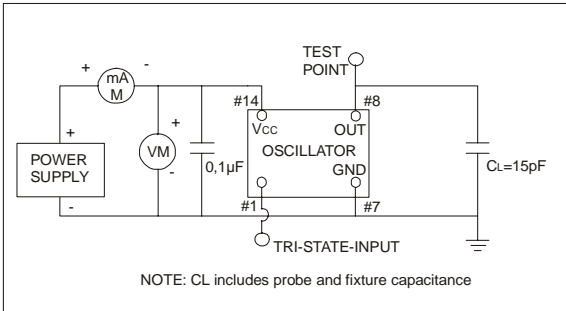
- HIGH RELIABILITY FOR LOW COST
- CHEAPEST AVAILABLE SMD-CLOCK-OSCILLATOR
- FREQUENCY STABILITY TO +/-15 PPM AVAILABLE
- SUPPLY VOLTAGE OF 5.0, 3.3, 2.5 AND 1.8 VDC AVAILABLE
- NEW STANDARD FOR SMALL LOW COST OSCILLATORS
- EXTENDED WORKING TEMPERATURE RANGE TO -40/+105°C AVAILABLE



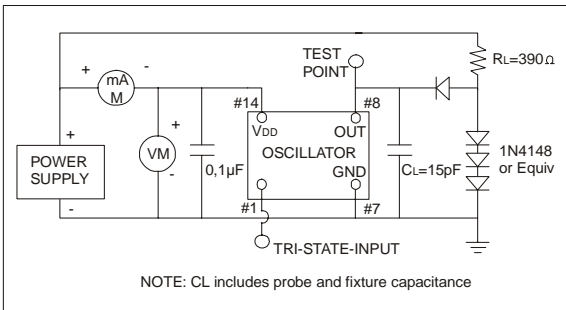
SMD-LOW-COST CLOCK-OSCILLATOR SERIES			SXO-05032			
PACKAGE			Ceramic package 5.0 x 3.2 x 1.2 mm ³			
FREQUENCY RANGE	5.0 VOLT		1.0 ~ 125.0 MHz			
	3.3 VOLT		1.0 ~ 125.0 MHz			
	1.8 VOLT		1.0 ~ 100.0 MHz			
FREQUENCY STABILITY			+/-15 ~ +/-100 PPM			
AGING			+/-2 ppm max. per year			
OPERATING TEMPERATURE RANGE			-10/+60°C ~ -40/+105°C			
STORAGE TEMPERATURE RANGE			-55/+125°C			
INPUT	VOLTAGE	+1.8 VDC +/-5%	+3.3 VDC +/-10%	+5.0 VDC +/-10%		
	CURRENT	1.0 ~ 4.0 MHz = 10 mA max.		1.0 ~ 4.0 MHz = 10 mA max.		1.0 ~ 4.0 MHz = 10 mA max.
		4.0 ~ 32.0 MHz = 20 mA max.		4.0 ~ 32.0 MHz = 20 mA max.		4.0 ~ 32.0 MHz = 30 mA max.
		32.0 ~ 80.0 MHz = 30 mA max.		32.0 ~ 80.0 MHz = 30 mA max.		32.0 ~ 80.0 MHz = 45 mA max.
		80.0 ~ 100.0 MHz = 40 mA max.		80.0 ~ 100.0 MHz = 40 mA max.		80.0 ~ 100.0 MHz = 80 mA max.
			Lower input currents are available on request. Please indicate the special value when required.			
OUTPUT	SYMMETRY	STANDARD	40/60%			
		OPTION	45/55%			
	RISE AND FALL TIME		5 ns typical / 10 ns max.			
	"0" LEVEL	TTL 5 VOLT	0.4 V max.			
	"1" LEVEL		+2.4 V min.			
	"0" LEVEL	CMOS 5 VOLT	10% VDD max.			
	"1" LEVEL		90% VDD min.			
	"0" LEVEL	TTL 3.3 VOLT	0.4 V max.			
	"1" LEVEL		+1.4 V min.			
	"0" LEVEL	CMOS 3.3 VOLT	10% VDD min.			
	"1" LEVEL		90% VDD max.			
	"0" LEVEL	CMOS 1.8 VOLT	10% VDD min.			
	"1" LEVEL		90% VDD max.			
LOAD	TTL	1 ~ 10 TTL				
	CMOS	15 ~ 50 pF (1.8 VDC = 15 pF max.)				
PIN 1	STANDARD	WITHOUT ENABLE/DISABLE FUNCTION				
	OPTION	WITH ENABLE/DISABLE FUNCTION				

OTHER PARAMETERS ARE AVAILABLE ON REQUEST / CREATE HERE YOUR SPECIFICATION

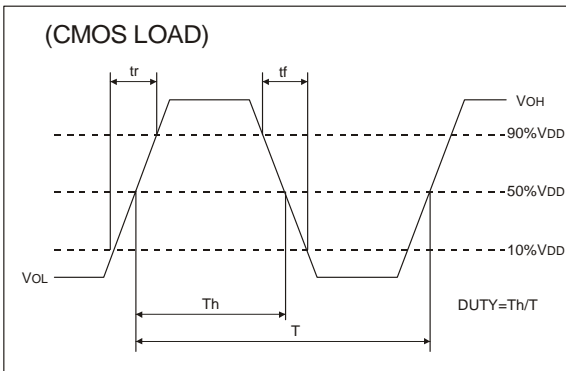
TEST CIRCUIT CMOS



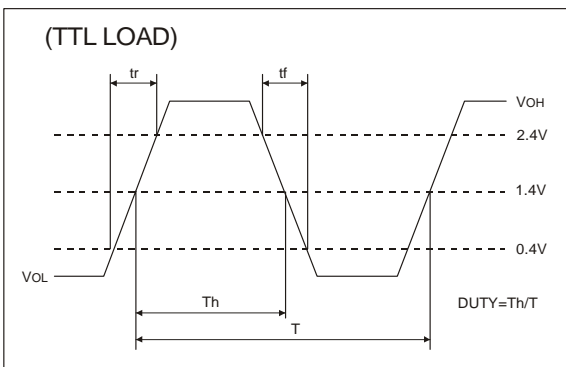
TEST CIRCUIT TTL



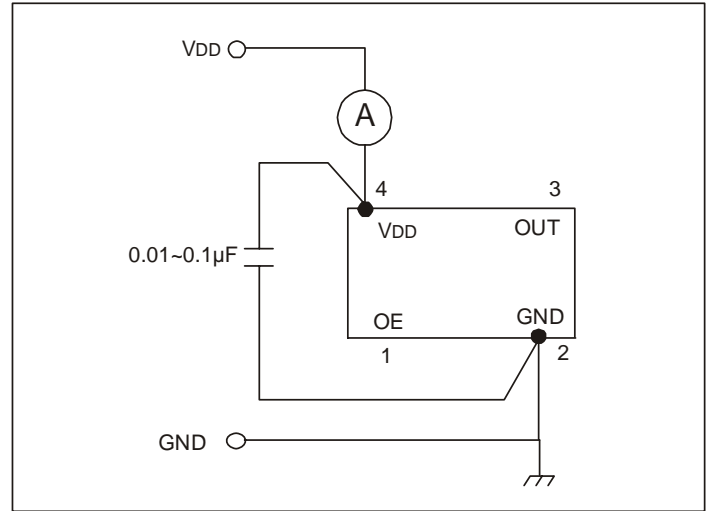
OUTPUT WAVE FORM CMOS



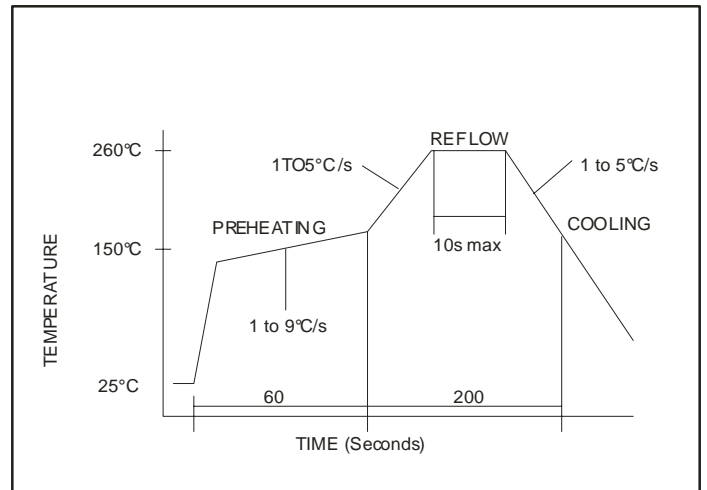
OUTPUT WAVE FORM TTL



INPUT CURRENT



REFLOW SOLDER PROFILE



Oscillators can be soldered according to the norm JEDEC J-STD-020C.

TAPE AND REEL DIMENSIONS

