

SMD VCXO 5.0x3.2mm 6 pad 3.3 - 5.0 VDC MHz

SERIES "SXO"

FEATURES

- + High reliability for low cost
- + Frequency stability to ± 20 ppm
- + Available in 5.0 and 3.3 Volt
- + Extended temperature range -40°C to $+85^{\circ}\text{C}$
- + Applications: fibre channel, telecom, set-top box, broadband, etc.



PB FREE / ROHS-2 2011/65/EU COMPLIANT

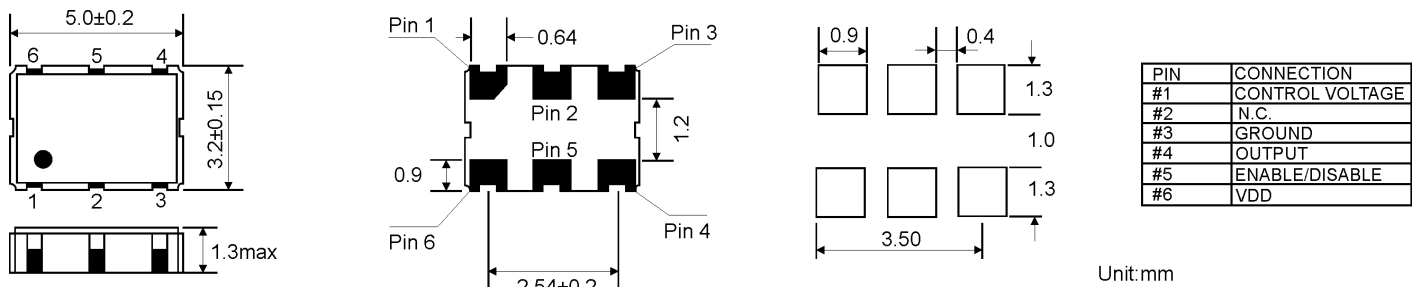
GENERAL DATA

PARAMETERS		PRODUCT FEATURES AND CONDITIONS		
SMD-OSCILLATOR SERIES		SMD-VCXO6		
PACKAGE		Ceramic package 5.0 x 3.2 x 1.3 mm ³		
FREQUENCY RANGE		1.0 ~ 40.0 MHz		
FREQUENCY STABILITY		± 20 ppm / ± 25 ppm / ± 50 ppm		
OPERATING TEMPERATURE RANGE		$-20/+70^{\circ}\text{C}$ ~ $-40/+85^{\circ}\text{C}$		
STORAGE TEMPERATURE RANGE		$-55/+125^{\circ}\text{C}$		
INPUT	VOLTAGE	$+3.3\text{VDC} \pm 5\%$ / $+5.0\text{VDC} \pm 5\%$		
	CURRENT	25 mA max.		
OUTPUT	SYMMETRY	STANDARD	40/60%	
		OPTION	45/55%	
	SIGNAL	CMOS/HCMOS		
	RISE AND FALL TIME	8 ns max.		
	"0" LEVEL	CMOS/HCMOS	0.4VDD max. or 10% VDD max.	
	"1" LEVEL		2.4VDD min. or 90% VDD min.	
LOAD	15 pF ~ 30 pF			
START-UP TIME		10 mS max.		
INPUT IMPEDANCE		10 k Ω min.		
MODULATION BANDWIDTH (BW)		5 kHz min.		
CONTROL VOLTAGE RANGE		1.65VDC ± 1.35 VDC for +3.3VDC / 2.5VDC ± 2.0 VDC for +5.0VDC		
CENTER VOLTAGE		1.65VDC for +3.3VDC / 2.5VDC for +5.0VDC		
PULLING RANGE		± 50 ppm ~ ± 100 ppm min.		
LINEARITY		10% max.		
SLOPE		POSITIVE		
PHASE NOISE		-70dBc/Hz @10Hz		
		-130dBc/Hz @10kHz		
PIN CONNECTION	PIN 1	CONTROL VOLTAGE		
	PIN 2	NOT CONNECT		
	PIN 3	GROUND		
	PIN 4	OUTPUT		
	PIN 5	ENABLE/DISABLE FUNCTION		
	PIN 6	SUPPLY VOLTAGE		
	OPTION	OTHER PIN CONNECTIONS AVAILABLE ON REQUEST		

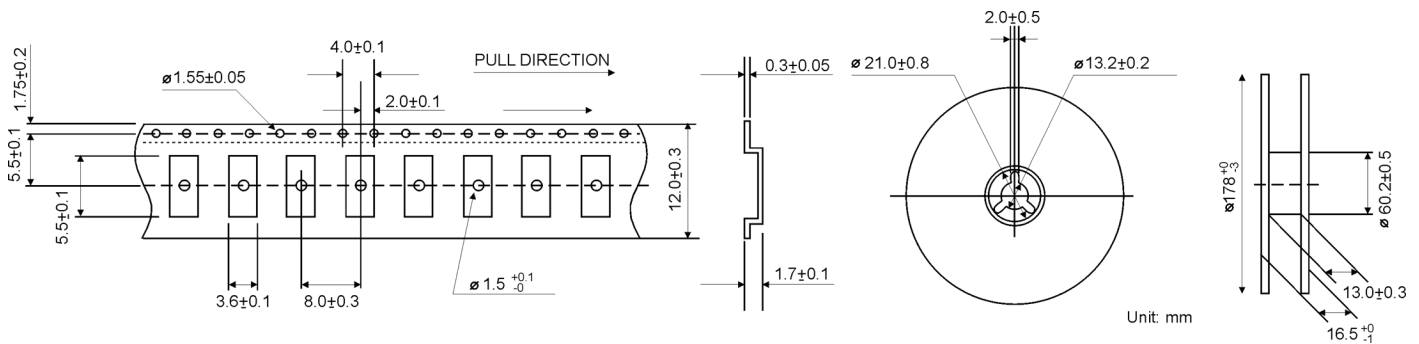
GENERAL DATA (CONTINUED)

PARAMETERS		PRODUCT FEATURES AND CONDITIONS	
ENABLE / DISABLE FUNCTION		PIN 5 ENABLE/DISABLE	PIN 4 OUTPUT
		HIGH OR LEFT FLOATING	OSCILLATION
		LOW	HIGH IMPEDANCE
DELIVERY FORM	Tape and Reel / 1.000 pcs. per reel, other quantities are available on request		
OTHER PARAMETERS ARE AVAILABLE ON REQUEST / CREATE HERE YOUR SPECIFICATION			

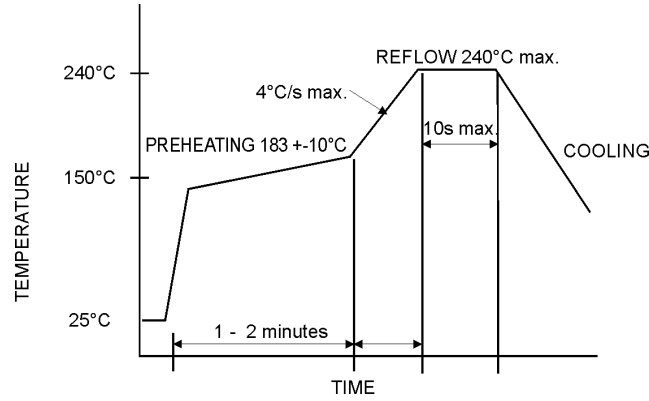
OUTLINE DRAWING



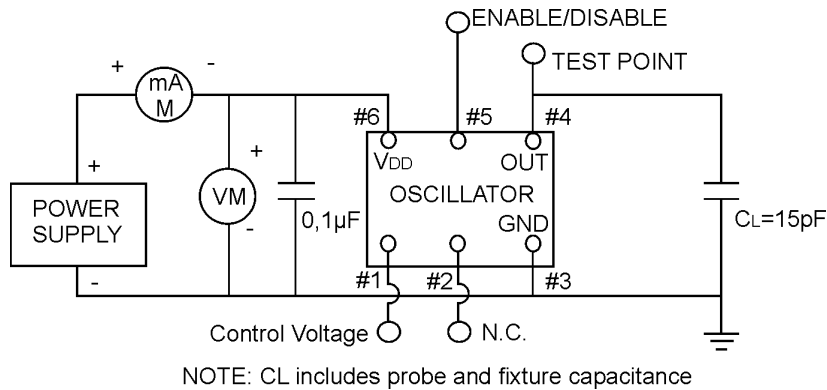
REEL SPECIFICATION



REFLOW SOLDER PROFILE

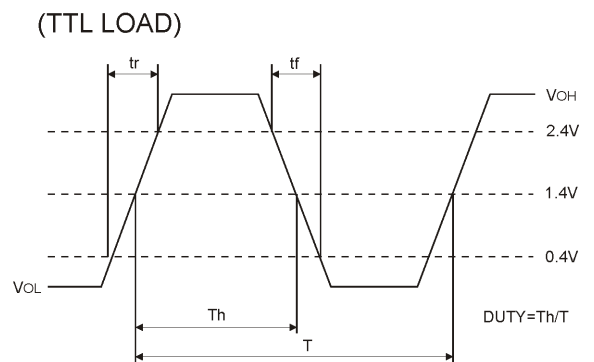
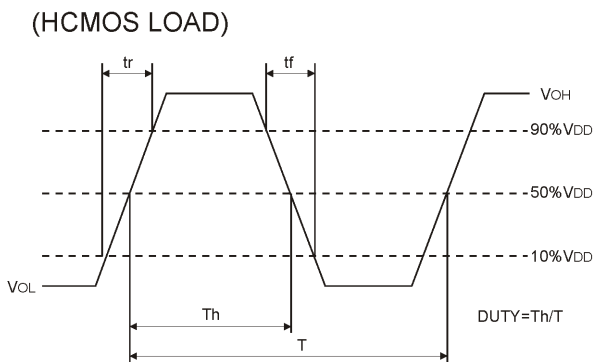


TEST CIRCUIT FOR CMOS/HCMOS

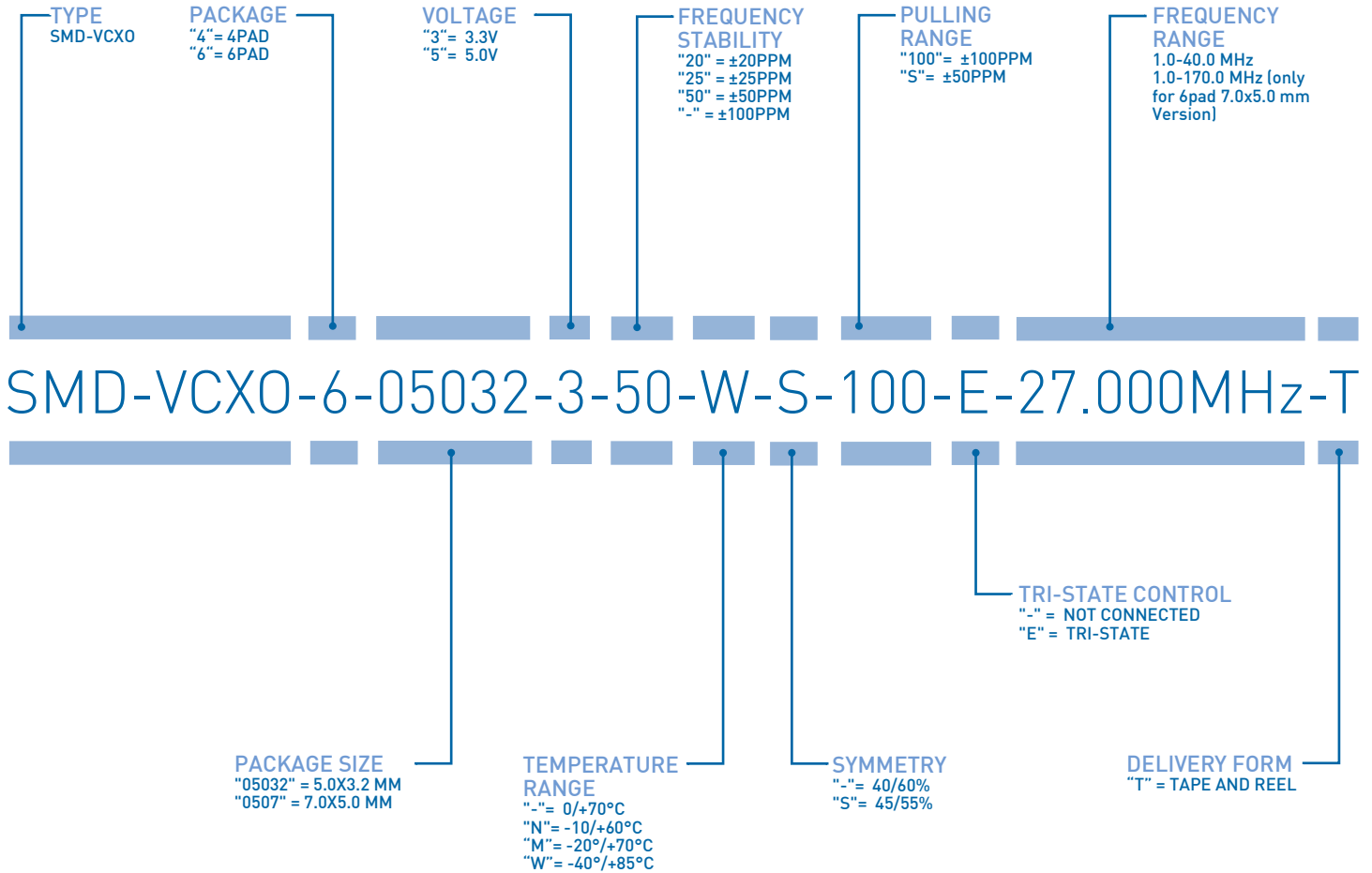


CMOS/HCMOS LOAD

TTL LOAD



ORDERING INFORMATION



EXAMPLE: SMD-VCXO-6-05032-3-50-W-S-100-E-27.000MHZ-T
 PLEASE INDICATE YOUR REQUIRED PARAMETERS



PREMIUM QUALITY BY PETERMANN-TECHNIK



OUR COMPANY IS CERTIFIED ACCORDING TO ISO 9001:2015 IN OCTOBER 2016 BY THE DMSZ CERTIFIKATION GMBH.

THIS IS FOR YOU TO ENSURE THAT THE PRINCIPLES OF QUALITY MANAGEMENT ARE FULLY IMPLEMENTED IN OUR QUALITY MANAGEMENT SYSTEM AND QUALITY CONTROL METHODS ALSO DOMINATE OUR QUALITY STANDARDS.